

WAITAKERE ORCHID CLUB BULLETIN

EDITOR: Mary Jones

1 Gunner Drive, Te Atatu Pen, Auck 0610 Ph (09) 834 6989

Email:jonzie@clear.net.nz

VOLUME 31 NO. 06

JUNE 2013

PRESIDENT: Lee Neale

6 Rata Road, Whenuapai, Auck 0618

Ph (09) 416 6737

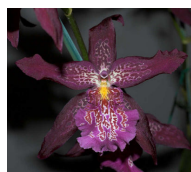
Email: leeandroy@ihug.co.nz

SECRETARY: Pauline Weeks

50 Gloria Ave, Te Atatu Pen, Auck 0610

Ph (09) 834 3459

Email: pweeks2011@gmail.com



Paph (Hsinying Rujo xMacabre)'Shellnick HCC/
NZOS, from Chris Whitby and Alra Marfitch
'Howard's Dream' AM/AOS, from Bryan Sharpe.
Popular vote first equal. Congratulations!

MESSAGE FROM THE SHOW MARSHAL

Show Working Bee - it's got around to that time of the year again! The working bee will be held on **Sunday 21st July, 2.00pm** at Lee and Roy's. We need you to help assemble small signs, make ribbons for flower power and laminate various bits and pieces for the show.

There will be another working bee on **Saturday 10th August** to put up the large signs. We need two teams of men for this. Please let Roy know if you can help.

We will need helpers during the show in the following areas:

Thursday - set up, runners.

Friday - kitchen, raffle table, trading table, flower power, floor walkers.

Saturday - Same as Friday and break down of the show.

I will take names at the August meeting.

The club will be putting on a display at the NZOS winter Show. Set up is Friday July 12th.

Please let us know if you have show quality plants we can use.

Thank you

Glenys.

NEXT MEETING
Tuesday July 2nd 7.30pm
(7.00pm Early Forum for newer
members).
Lions Whitehouse

Roy Neale will conduct Early Forum. His talk will be on Cymbidiums.

Our main speaker will be Phil Funnell who will speak on 'Weird and Wacky' orchids.

Please bring a small plate for supper, which will be held during the meeting.

Help will be needed to vacuum the hall after the meeting.

Please wear your name badge on club night.



Raffle results...



Winners this month were Glenys Mac-Rae and Barry Wilkinson.

Thanks to the club and Leroy Orchids for raffle donations.

The club made \$67 which will help pay our expenses.

Waitakere Orchid Club:
President's Report 4th June 2013

I am pleased to present my first President's Report to the members of the Waitakere Orchid Club Inc. We have had, overall, a very successful year, a tribute to you all.

Committee members labour behind the scenes to ensure we have guest speakers, raffles, culture spots and all the other activities which go on at our monthly meetings. Starting in February this year, we initiated an early forum for newer members, where a particular genera is discussed; this has proved a popular introduction.

During the year we have had 3 guest speakers from other clubs, Grahame Hill from Taranaki, Keith Smart from Waikato, and Roy Walker from Wellington. There was also the added bonus of 2 overseas speakers attending other local clubs where interested members were welcome to attend and thus able to catch up on information from outside our shores, Scott Barrie from Australia and Roy Tokunaga from Hawaii were both excellent and informative speakers – our knowledge bases have had plenty of opportunity for extension.

A large part of our club's activity is the preparation and running of the shows, where we can 'strut our stuff', acquire new plants and make new friends, but mostly so as we can all get some form of enjoyment and knowledge from our chosen hobby. Our successful Spring Show and Ribbon Show both draw a lot of interest and support from members of other clubs and in return we support their shows with displays and plant entries. This year our club display won a 3rd place at the NZOS Winter Show and South Auckland

Charity Show as well as 1st Place at Howick – a great achievement. Besides these shows our members have exhibited and won places at Bay of Islands, Bay of Plenty, Cymbidium Society of America (NZ Branch), Hibiscus Coast, North Shore, NZOS Spring Show, Tauranga and Taranaki Shows. In fact one of the highlights of the year was the 3 day Bus Trip the club organised to the Taranaki Summer Show.

Unfortunately the club has also suffered losses over the year with the deaths of two members, Reg Watson and David Forsythe, and the resignation of several other members. On the brighter side we have also welcomed new members, keeping our membership at a relatively stable level.

On a personal note I would like to thank all members who have supported me and ultimately the club over the past 12 months, those who hold positions and those who just get in and help when needed, without the support of you all the WOC would not flourish.

I look forward to another year of orchiding achievement and enjoyment.

Lee Neale.

President Waitakere Orchid Club.

SHOW DATES TO REMEMBER

NZOS Winter Show - July 13th - 14th

Hibiscus Coast - July 27th (at Warkworth).



CSA - August 17th.

Waitakere Orchid Club - August 23 –24

Hibiscus Coast - September 6th - 7th.

NZOS Spring Show—September 14th—15th.

Tauranga Orchid Society - September 20th –22nd.

South Auckland Orchid Society - September 21-22.

South Auckland Orchid Society - Sept 21st– 22nd

Whangarei Orchid Society - Open to public September 27 & 28.

Howick Orchid Society - October 5 (1 day show)

Bay of Islands Orchid Society - Open to Public 11 & 12 October.

FROM THE JUNE MEETING

Apologies: Ray Hogan, John Stewart, Shirley Sidnam, Bev Meredith, Pamela Mason and June Sutton.

Sick: Miriam Corban and Bernadette Edmiston.

Notices:

President Lee welcomed members. Lee thanked Chris for his phally talk to Early Forum members. She also encouraged members to check out the phally books we had selected from the library.

An invitation from Howick Orchid Society was extended to members. Please join them on June 9th for a talk and slide show by Ross Bicknell on pleiones.

Lee asked members to consider alternative suggestions for our Xmas meeting, she will ask again next month after you have had time to think about it.

She also suggested a dinner out on the Saturday night after our show. There was a good response to this suggestion.

Club shirts were discussed. Orders will be taken next month for Polo shirts. Please bring \$30 when you order.

PLAYING WITH POLLEN!



Both Lee and Roy gave us a most interesting talk and demonstration on pollination.

Choosing the orchids for their characteristics, colour, size and expectation of the cross was explained to us.



We were told how to record the parents names, to label the flowers concerned, photograph and date the cross, then wait for results.

We were invited to try to do a pollen cross ourselves. Anne did a pretty good job. (I think she might go home and practice!).

WAITAKERE ORCHID CLUB AGM

Lee presented the President's report.

Ken delivered the Treasurers report.

Glenys read the minutes of the last AGM.

All reports were accepted.

Election of officers followed with results being:

President: Lee Neale.

Vice President: Ken Morse.

Treasurer: Bryan Sharpe.

Secretary: Pauline Weeks.

Trustees for Term Deposit: Lee Neale and Bryan Sharpe.

Chairman Publications: Mary Jones.

Committee: Lee Neale and Pauline Weeks.

Chairman Social: Roy Neale.

Committee: Joy Intveld, June Sutton, Margaret Shaw.

Library: Irene Levet and Robert Wickham.

Membership: Jill Mickleburgh.

Programme: Dennis Chuah.

Auditor: Allan Levet.

Executive Committee: Ross Crabb, Melvin Alexander. Barry Baxter, Glenys MacRae, Hugh Fraser and Anne Bernard.

General Business: Update of signatories - Ken Morse to be removed and Bryan Sharpe put on.

Thanks were extended to Ken Morse for his work as Treasurer and to Bernadette Edmiston for being Librarian.



SHOW PLANT PREPARATION

Roy gave us a few tips and 'tricks of the trade' on presentation of flowers while they are still developing on the spikes.

We found that with just a little bit of foresight we can present a plant for the show bench in a much superior way.

I am sure it will be a great help to us all.

Thanks Roy.

PLANTS ON DISPLAY

Aliceara

Alcra. Marfitch 'Howard's Dream' AM/AOS
(was a Beallara) – Bryan Sharpe

Bratonia

Brat. Dennis Kleinbach* 'Crowhurst' AM/
AOS (was a Miltassia) – Bryan Sharpe

Brat. Dennis Kleinbach* 'Crowhurst' AM/
AOS – Don Hodge

Calanthe

Cal. Rozel – Chris Whitby

Cal. *vestita* – 5 plants in a basket – Dennis
Chuah

Cattlianthe

Ctt. Portia coerulea (was a cattleya)– Wendy
Gilligan

Ctt. Ruby Embers (was a sophrolaeliocattleya)
– Wolf Grausch

Dendrobium

Den. *glomeratum* # (was *crepidiferum*) –
Linda Alexander

Dendrochillum

Ddc. *cobbianum* – Dennis Chuah

Masdevallia

Masd. Fraseri 'Ken'

Masd. Rubicon 'Cliffy'

Masd. Susan– Ken Morse

Oncidium

Onc. sotoanum

Onc. Anklet

Onc Goldfinger

Onc. Kendrick Williams 'Rosslow'

Onc. Apperley Bridge x *crispum*

Onc. Land Breeze – Leroy Orchids

Onc – un-named – Bryan Sharpe

Oncostele

Ons. Wildcat (was a Colmanara) – Leroy Or-
chids

Paphiopedilum

Paph. Krishna –William and Man Lo

Paph. Hsinying Rujo x Macabre (granted an
HCC/NZOS at the meeting) – Chris Whitby

Phaleanopsis

Phal Dublin — Linda Alexander

? = unable to confirm name on OrchidWiz

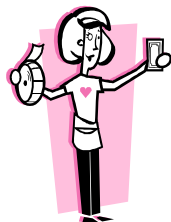
= Name Change, cross now registered,
please update your label

*= Spelling correction needed on label.

Plant names written in *italics* depicts it is a
species.

Our plant commentary was conducted by
Lee Neale and Chris Whitby.

OCNZ RAFFLE



It's that time again when we help the
club and OCNZ by selling raffle
tickets. I will have them available at
the next club meeting so please eve-
ryone who considers the WOC their
parent club sell at least one book.

The funds evolved help the OCNZ pay for EXPO
costs and help the club fund our display. We are very
excited about our display and feel it will do the club
proud, but it does take a bit of funding, so even if you
can't be there, supply plants or do anything else your
contribution by way of ticket sales will be greatly
appreciated.

This year tickets are \$2 each but there are only 5 in a
book. The raffle is limited to 6,000 tickets so your
chance of winning a prize is greatly increased. There
are still 3 prizes -1st \$1,500; 2nd \$1,000; 3rd \$500;
grocery vouchers of the winner's choice.

Thanks Lee

from behind the shade house



We missed June at the last meeting.
She and Gordon are cruising in
Alaska.



Linda and Melvin Alexander have be-
come proud grandparents for the first
time and welcome granddaughter Lau-
ren to their family.



Jim and Margaret Shaw are awaiting
their first great grandchild.