

# WAITAKERE ORCHID CLUB BULLETIN

EDITOR: Mary Jones

1 Gunner Drive, Te Atatu Peninsula. Ph/Fax (09) 834 6989 Email jonzie@paradise.net.nz

VOLUME 27 No. 06

AUGUST 2009

**PRESIDENT: Dennis Chuah**

22 Amery Place, West Harbour. Ph(09) 416 7873

Email : Dennis@inetgardens.com.

**SECRETARY: Pauline Weeks**

50 Gloria Ave, Te Atatu Pen. Ph (09) 834 3459



Dennis took this amazing photo of our Spring Show. We had a wonderful selection of orchid plants entered.

## MESSAGE OF THE MONTH

Apologies for the newsletter being a wee bit late. I was wanting to have show results for you.

We had a great weekend. Thank you to those members who arrived on Thursday morning and were still there on Sunday evening! It was a lot of fun! There are far too many helpers to thank personally and I don't want to miss anyone out – you all know who you are - we are very grateful for the effort and time you gave. Some took annual leave from their jobs and those people need an extra thank you.

Kitchen staff worked tirelessly to feed us and the public. Flower Power also worked very hard and have the sore fingers as proof! Door and raffle crew kept a cheery face for days on end. Trading Table staff were very busy, and a big thank you to the willing club members who did all the extra jobs that they were called upon to do. Thanks also to the Judges and runners who worked very hard on Friday morning.

Well done gang! Waitakere Orchid Club is very lucky to have such willing and cheerful helpers.

ED

**NEXT MEETING**  
**Tuesday September 1st**  
**7.30pm**  
**Lions Whitehouse**



Special night for new members to introduce them to our world of orchids. Everyone will learn from this night so bring along your expertise and knowledge to pass on to others!

Plants on display, trading table and library will all be operating.

Please bring a small plate for supper which will be held during the meeting.

Volunteers will be needed to help vacuum the floor after the meeting



***Raffle Results...*** We had 4 winners this month. Joy Intveld, Barry Baxter, Bev Meredith and Lottie Hogan. Thanks to those members who donated prizes. The club made \$86.00 from the raffle.

## FROM THE AUGUST MEETING

President Dennis welcomed 41 members and a special visitor Lee's 92 year old Aunt, Sylvia Stewart.

**Apologies:** Pam and Bruce Hughes, Betty Major, Patrick Stepancic, Mike Mason and Linda Alexander.

**Notices:** Dennis thanked Reg Watson for the signage he has especially built for our Spring Show. Volunteers were asked to have a turn at vacuuming the floor.

Members commented that the orchid display at the Museum is well worth a visit.

Help is needed at our show, a few hours would be acceptable from members.

Pacific Growers have Taranaki bark, Nos. 2,3,4,& 5. Phone them first.



Waitakere Orchid Club won first prize at the South Auckland Show, with the win comes a \$100 prize! Thanks to Roy and Ross for putting up the display on our behalf.



### *CULTURE QUESTIONS*

**Q.** Member has a mini cat, she does not have a green house and asks can it go into the shade house and be watered overhead.

**A.** Definitely not now as it needs a bit of comfort over the winter. In the summer it can go out to the shade house.



### **Guest Speaker Peter C Elfleet Holiday in Egypt.**

Peter gave us a wonderful talk on his trip to Egypt earlier this year.

He had a Power Point presentation for us and we almost felt we were there too! The pictures were unbelievable! I don't know how you remembered all those names Peter! You had obviously researched the itinerary extremely well as we were told several of the legends which made it such an interesting evening.

The holiday included a balloon flight over the pyramids, a cruise down (or was it up) the Nile and also a journey through the Holy Lands.

Top marks for your talk Peter. I am sure you will have many happy hours 'checking out' the thousand odd photos you took - great presentation, We loved it.

ED

### **FEEDING TIME!!**

Spring is here and your orchids will be starting to grow after the winter. Bring a sample of your orchid fertilizer to the meeting for Roy to test, as we want to make sure your starting levels are correct.



### **BUS TRIP**

Don't forget we are hoping to have a bus trip this Labour Weekend. Mark your calendar for the **Saturday** of Labour Weekend. More information at the next meeting.



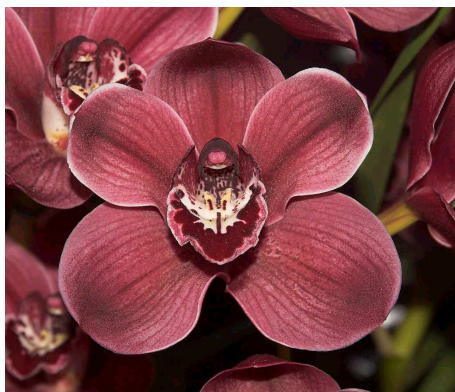
**Chris Whitby won the popular vote this month at club with Tolumnia Love That Red x (Deborah Le Monde x Susan Perreira). Congratulations!**

*Happy September Birthday to.....*

Geraldine Wood and  
Walter Krawchenko



**WAITAKERE ORCHID CLUB SPRING SHOW**  
**RESULTS 2009**



**GRAND CHAMPION**

**Cym Hot Port 'Henderson'**

**CORBAN CUP** .... For Grand champion.

Cym Hot Port 'Henderson'  
- Villa Orchids

**BILL van der LINDEN MEMORIAL TROPHY**....for reserve champion.

Cym Lady Jane x Abacus  
- R Tucker

**MALLANA CUP**...for best standard cymbidium.

Cym Yowie Pepper x Coraki Gold  
- Leroy Orchids

**LARSEN TROPHY**....for best export cymbidium.

Cym Bombay Candy 'Betty'  
- Villa Orchids

**FINLAY TRAY**....for best intermediate cymbidium.

Cym Lady Jane x Abacus  
- Ross Tucker

**LINWOOD JUG**....for best first flowering miniature cymbidium .

Cym Key Largo x devonianum  
- Ross Tucker

**GRONWELL and DAWE CUP**...for best first flowering standard cymbidium.

Cym Yowie Pepper x Coraki Gold  
- Leroy Orchids

**FRANK GRONWALL TRAY**....for best first flowering intermediate cymbidium.

Cym Vibrant Bliss x Last Tango  
- Leroy Orchids

**HARDY and FOUQUETTE TROPHY**....for best species.

Sarco hartmanii  
- Leroy Orchids

**CATTLEYA CUP**....for best large cattleya.

L jongheana  
- Leroy Orchids

**REHIA TROPHY**....for best phalaenopsis.

Phal Canyon Sun '#2'  
- Chris Whitby

**GERRY HOLLOWAY MEMORIAL CUP**.....

for best pink phalaenopsis

Phal Hsinying Leopard x Leopard Prince  
- Ross Tucker

**DEL CHANDLER CUP**....for best oncidium alliance.

Wils Hilda Plumtree  
- Alf Day

**N & R ARMSTRONG CUP**....for best mini cattleya.

Gsl Hazel Boyd x (S briegei x Sc Anzac)

- Beryl Calder

**JOHN HUGHES CUP**....for best commercial display.

- Villa Orchids

**ELFLEET VASE**....for best cymbidium exhibited by a novice grower.

No Entries

**CALDER CUP**....for best miniature or intermediate cymbidium exhibited by a novice grower.

No Entries

**AAK & BA CORBAN BOWL**...for best any other genera exhibited by a novice grower.

Masd Misfit

- Lee Stone

**MORRIN CUP**....for best intermediate cymbidium.

Cym Sarah Jean

- Ken Morse

**E & D CAMPBELL CUP**.... For best culture and presentation of any plant of any other genera, excluding cymbidiums.

Ang Veitchii

- Mike & Leigh Leaity

**JOYCE UNDERWOOD TROPHY**....for best pleurothal-lid alliance

Masd Copper Angel 'Big N Bold'

- Ken Morse

**BERYL BROWNLEES MEMORIAL CUP**....for best specimen cymbidium.

Cym Pure Wally 'Lizzy'

- Mick Hughes

**JOAN WOOD TROPHY**....for best floral art points.

-Irena Ong

**STAN PYE TROPHY**....for best miniature phalaenopsis.

Phal Mancervi

- Michelle Tung

**WOC TROPHY**....for novice points prize..

- Lee Stone

**LEROY ORCHIDS TROPHY**....for best dendrobium

Den Kuniko

- Dennis Chuah

**MARY JONES TROPHY**...for best paphiopedilum.

Paph Bellatulum x Arthur Kaplan

- Chris Whitby



**Judges 'at work' at our Spring Show.  
Do you recognize the back views?**

## PLANTS ON DISPLAY

### ANGRAECUM

*Angcm veitchii*

- Ray and Lottie Hogan

### CATTLEYA

C Unknown (Janet Clay plant)

- Bernadette Edmiston

*C intermedia* 'Alba' #

- Ron Reeves

C Unknown

- Ray and Lottie Hogan

### COELOGYNE

*Coel flaccida*

- Dennis Chuah

### CYMBIDIUM

Cym Little Kiwi 'A'

Cym Little Kiwi 'E'

- Leroy Orchids

Cym Kelly's Winter 'Robyn' #

- David Forsyth

Cym *dayanum* #

- Ron Reeves

### DENDROBIUM

Den Lemon Glow x Hilda Poxon #

- Pamela Mason

Den Schroder's Delight x Convolutum 'Red'

Den Riversun x Avril's Gold 'Super Gold' #

Den Lisa Turner

- William and Man Lo

Den Chinsai #

- Ray and Lottie Hogan

### DENDROCHILUM

Ddc *glumaceum*

- Ray and Lottie Hogan

### LAELIA

*L anceps* Var Oaxaca

- Leroy Orchids

*L anceps*

- William and Man Lo

### LAELIRHYNCHOS

Lrn Sea Urchin

- Bev Meredith

### LAELIOCATTLEYA

Lc Santa Barbara Sunset 'Tuakau'

- Leroy Orchids

### ISABELIA

- *Isa pulchella* #

- Pauline Weeks

### PAPHIOPEDILUM

Paph Po Tree

- William and Man Lo

Paph Cocoa Cherry x Mod Maude

(now known as Dark Prince Reg 2002) #

- Chris Whitby

### PHALAENOPSIS

Phal Canyon Sun 4N

- Chris Whitby

### RODRIGUEZIA

Rdzu *secundu* (First Flowering seedling)

- Dennis Chuah

### SOPHROCATTLEYA

Sc Bright Angel x *S brevipenunculata*

- Dennis Chuah

Sc *Intermedio-flava* (Reg 1896)

- Ron Reeves

### TOLUMNIA

Tolu (Love That Red x Deborah Le Monde x

Susan Perreira) #

- Chris Whitby

Those members with a # beside their plant name, please correct your label.

Names written in *italics* depicts it is a *species*.

The plant commentary was conducted by Peter C Elfleet.



*from behind the shade house.....*



Congratulations to Burt and Evelyn Ong who recently celebrated 25 years of marriage. May you have many more happy years together!

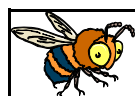


Heard that Assid Corban had been in hospital. Hope you are feeling better and are behaving yourself again!

Also on the sick list is Peter Elfleet Snr. who is in hospital as this goes to press. Our love and best wishes to you also



Peter, from all of us.



A small group of WOC members attended a working bee at Rata Rd. We had a lovely afternoon getting ready for our show. The boys painted the signs and the girls made ribbon bows for the Flower Power table. They are all experts now! We had a scrummy afternoon tea after which the girls urged Roy and his team in dragging a huge tree that Lee had decided must be planted before it burst into bloom! This was completed and now said tree looks very happy! Thanks team for your help. We had a great afternoon of camaraderie!



Pauline offered me a lollie at the show, I chose a milk shake-hadn't had one of those for years! Bad choice, tooth broke – dentist bill \$240.00!

Ouch! Marshmallows from now on! ED